



TREX Alarm System

TREX Alarm System



TREX is a wireless system for alarm management in care homes. Its wireless technology allows an extremely simple and cost saving installation as it requires no wired infrastructure. The coverage allows the care team unlimited mobility around the center, receiving directly on the TREX 2G unit all alarms that occur.

TREX 2G can associate different alarms caused by the user or professional, produced automatically by devices (door, bed, smoke, gas), produced automatically by the device to inform your state (technical alarms) allowing us to know the status of the unit.

System Accessories

TREX 2G Portable alarm receiver



Rechargeable portable alarm receiver with display, buzzer and vibrator. TREX has a display showing who needs assistance.

Pulse wireless devices

This devices spread across the center allow residents or care givers ask for help.

Wireless devices automatically activated

This devices enable professionals to meet a given situation (wandering, abandoned bed, fall, smoke, water).

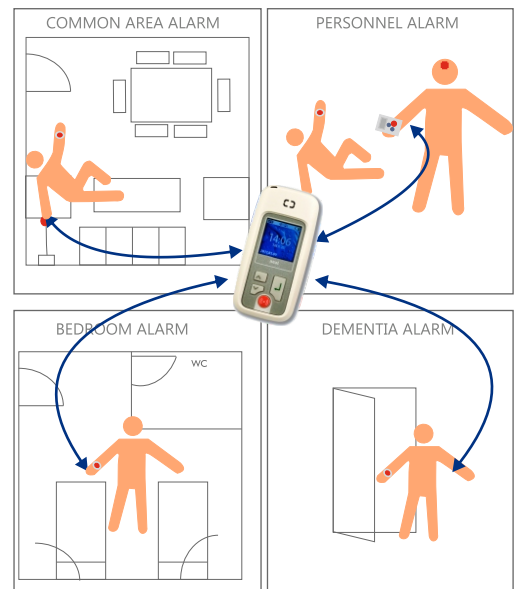
REPO Signal Amplifiers

Allow full coverage. Thus, professionals can receive alarms anywhere with total and absolute guarantee.

DTECT ALARM Alarm history software

professionals. Through its reporting module is possible analyze the management of all alarms and resources involved. Allows analyze response times since the start of the alarm until the end of the service and can measure our levels of quality care.

ALARM EXAMPLES



Installation and operation

All TREX alarm components are wireless, enabling quick and easy installation avoiding cabling works. REPO unit broadens the TEX System coverage radius getting unlimited coverage, requiring only a power supply of 220 V, is recommended to install one unit per floor.

Each TREX 2G unit allows associate up to 255 devices + 255 positions. You can create different working groups associated with different devices, thereby optimizing response times, with an optimal organization of professionals in the center. When an alarm is triggered, it will reach all TREX 2G units, warning the professional by beep and / or vibration. The display shows all data previously configured (Room No., name, device type) identifying the source of the alarm. When an alarm is accepted from a TREX 2G disappears from the other terminals, avoiding duplication of resources in attention. If the alarm management assistance is required, the professional may trigger such an alarm from the TREX 2G itself.

TREX Alarm System

Pulse wireless devices



ATOM - Trigger

Portable alarm transmitter, bracelet or pendant.



ROOM - Bed unit

Pear button (user alarm), red button (help a partner), yellow button (round log), green button (arrival / departure control time). It can wired two hallway lights for visual indication (user / help). Manual battery replacement



Bathroom Alarm

Wall mounting device. Manual battery replacement.



Fall Detector

Bracelet device, can be activated by the resident or activated automatically after a fall.

Wireless devices automatically activated



Bed Sensor

Device that can detect the presence of the resident. Return time can be configured, cancelling alarm if the resident returns on time, avoiding false alarms.



Door Alarm

Prepared to detect opening or closing doors. Manual battery replacement.



Smoke / Gas / Flood Sensor

Intended to detect flaming fires, gas or water leaks.



Wandering Alarm

Designed for users who require special monitoring: people with orientation problems, Alzheimer's or other dementia. Neat has developed a hidden detection system that identifies the wandering of this residents controlling hazardous areas as exterior doors.



UDAT - Wandering Alarm Bracelet

Designed for the mentally ill, brand new bracelet and ultra resistant seal that prevents from being removed without the help of professionals. Complies with sealing so users can have a bath with it.

Why Neat Technology?



- Because Neat is a manufacturer with over 20 years experience in the health care sector..
- Because we offer worldwide cover for our systems.
- Because we offer certified systems that meet all CE requirements..
- Because we are permanently in the pursuit of excellence to offer products and services with highest quality.