



BED
Installation guide

BED

Installation guide

INDEX

ATTENTION:.....	3
THE SYSTEM CONSIST OF:	3
Bed/Chair sensor.....	3
Connection cable from sensor to main unit.....	4
SENSOR INSTALLATION:	5
Install the sensor in the bed/chair unit we want to cover:.....	5
Installation the cable to main unit:	6
Central unit location:.....	7
Multiple unit:	8
Multiple unit connection.	10
Programming.....	11

ATTENTION: Before turning on the central unit to verify its proper operation, the system must be fully installed by following the steps outlined in this installation guide.

THE SYSTEM CONSISTS OF:

Main unit NE10 15006-01



Bed/Chair sensor

Multiple bed unit NE10 15007-03 / Chair NE10 15007-02



Elastic

It is very important to use the elastics units to fix the bed sensor in the mattress.

Two units, 2 x NE99 00067-01



Connection cable from sensor to main unit.

Connection cable to main unit NE10 15005-01



Connection cable for multiple sensor NE31 15005-02



Therefore, the complete unit with one bed sensor consists of:

- Main unit NE10 15006-01 x 1
- Multiple bed unit NE10 15007-03 x 1
- Elastics: Two units, NE99 00067-01 x 2
- Cable unit NE10 15005-01 x 1

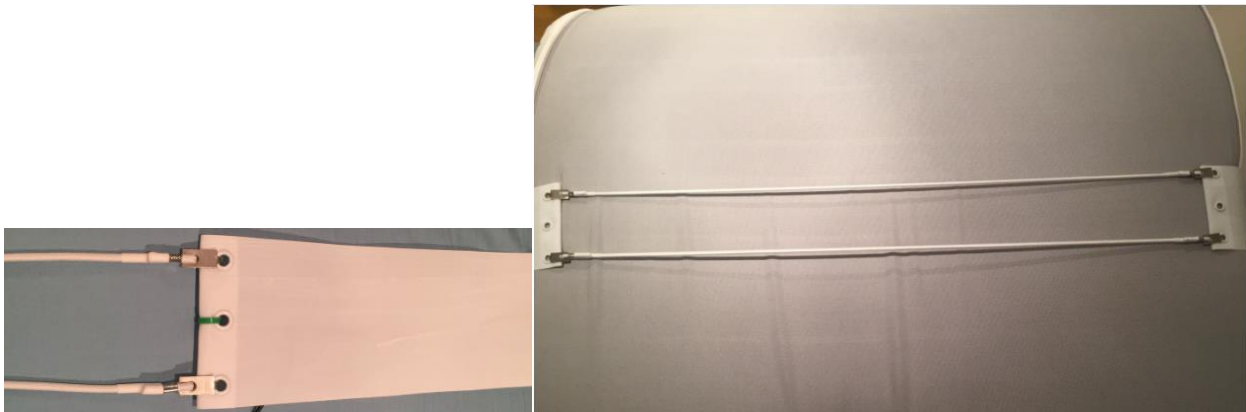
SENSOR INSTALLATION:

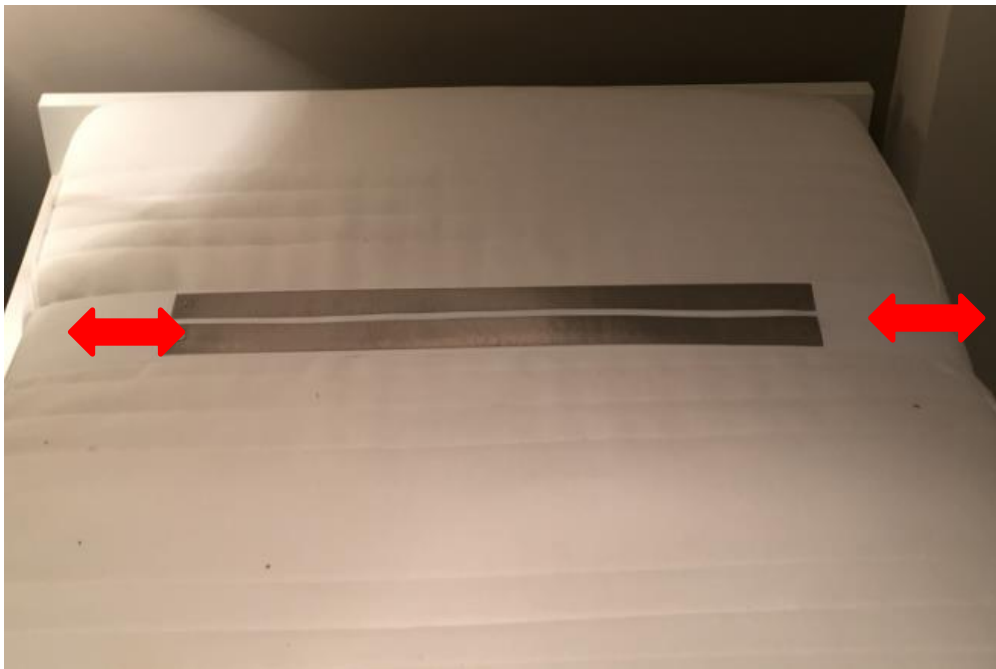
For proper operation, it is important to follow the steps below.

Before turning on the device, make sure the cable is connected to the mat and there is no contact with metal surfaces or any person on the sensor, since this can cause the sensor turns on incorrectly.

Install the sensor in the bed/chair unit you want to cover:

In order to prevent the sensor from moving, use the elastic adapters that are included with the sensor which will be attached to the buttonholes according to the following image.





Top view of the mattress

It is extremely important to ensure that the sensor bands are disposed on the surface of the mattress and never on the sides or bottom (bed / chair), which results in contact with metal surfaces (mattresses, barriers) causing false alarms.

Installation of the cable to the main unit:

Connect the cable to the corresponding terminals:



In addition, use the inner conduit to direct the cable to its final position:



Central unit location:

When the cable is connected to the sensor, it will be connected to the central unit via the mini-USB connection.



When it is in operation, if the cable disconnect, we should turn off the unit, connect the cable and then back on again following the steps described initially.

The main unit has a button to securely attach it to the sensor:



It has four different positions of anchors, look for the best option depending on the place where it will be located, avoiding the metallic barriers and pressure on the unit:

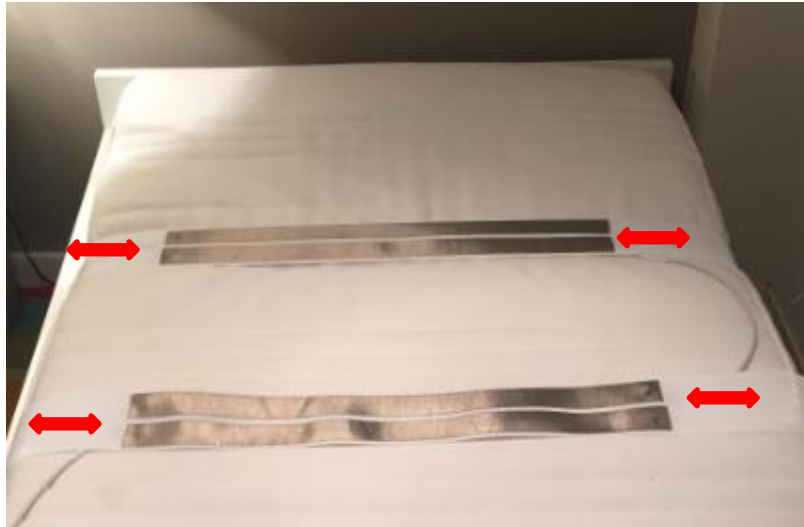


Once fixed avoid the cable being accessible to the user, leaving it fully collected inside the bag that incorporates the sensor:

Multiple unit:

In order to cover larger areas with users likely to change their position by the ends, there is the possibility to connect up to three sensors to the same central unit. This avoids false alarms when the user changes his position in bed.

This possibility to install multiple sensors (2 - 3 sensors), is recommended for users moving in a certain way and who are no longer in contact with the sensor. With the installation of 2 sensors we reduce drastically the sending of false alarms in this type of user.



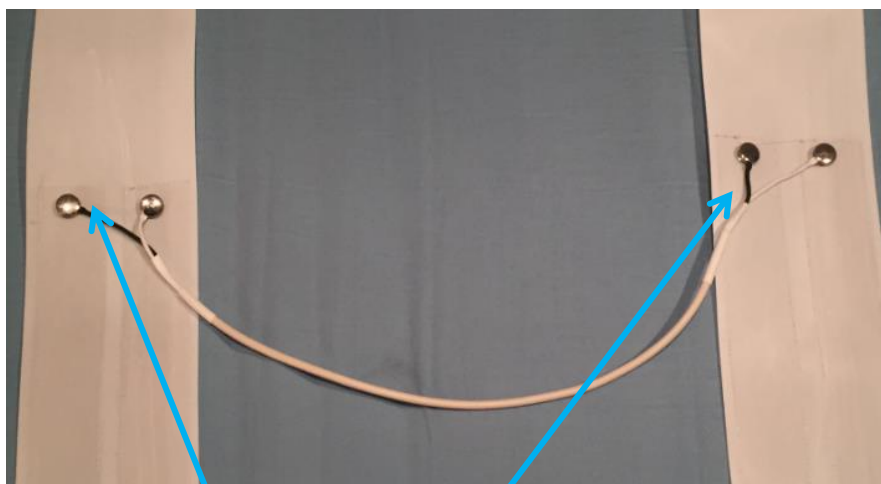
When the sensor or sensors are installed, they can be cover with mattress protector and bed sheet. Then you can proceed to powering up for verification. **NO POWERING** before completing the previous steps, otherwise, the system could behave erratically.



NOW YOU CAN INSTALL IT: In the turn on process you should wait for 5 minutes seconds before proceeding to check the unit, during this time the sensor is calibrating the place where it will be located.

Multiple unit connection.

For connecting multiple mats, use the terminals from each of the ends as shown in the following figure.



The central unit connects to one of the sensors using the simple cable

To connect the sensors two and 3 use the multi-cable with double terminal

Programming

See programming guide