



BED
Programming manual

BED

Programming manual

INDEX

Function	3
Neat programming unit (NPU) and BED program.....	3
Reading the PCU unit	4
Inputs	4
For the TREX 2G system	5
WORK GROUPS:	5
1- Alarm "Allow the user to leave the bed" at a set time:	5
2- "Lying/Up" Alarm.....	6
3- Unit connected and Unit disconnected Alarm.....	7
For the NEO system.....	7
Technical Alarms	8
ATTENTION: technical alarms need to be activated, so never insert the value 0, otherwise the unit will not work.....	8
Time schedule:.....	8
Time Region:.....	9
Radio Parameters	9
Product Information.....	9
Change Radio Codes in Device	10
To change the radio codes.....	10
File handling.....	11

Function

CPU function is a transmitter that allows simultaneously managing two different services:

- Sending an alarm in order to, for example, activate or deactivate the lighting system.
- Control of "bed leaving" by time



Neat programming unit (NPU) and BED program.

Connect the Neat Programming Unit (NPU) to a power outlet and to a USB-port on your computer. Note that the white cable can only be connected to the mini-USB connector on DOOR using an adapter cable.



Connect the NPU unit to the power supply and the USB cable to the computer. Note that the white cable can only be connected to the PCU using the black mini USB adapter.

When the PCU configuration program has been downloaded, you must install it on your computer.

Reading the PCU unit

To read the configuration of the PCU unit you have to select the communication tab as shown on the screen.

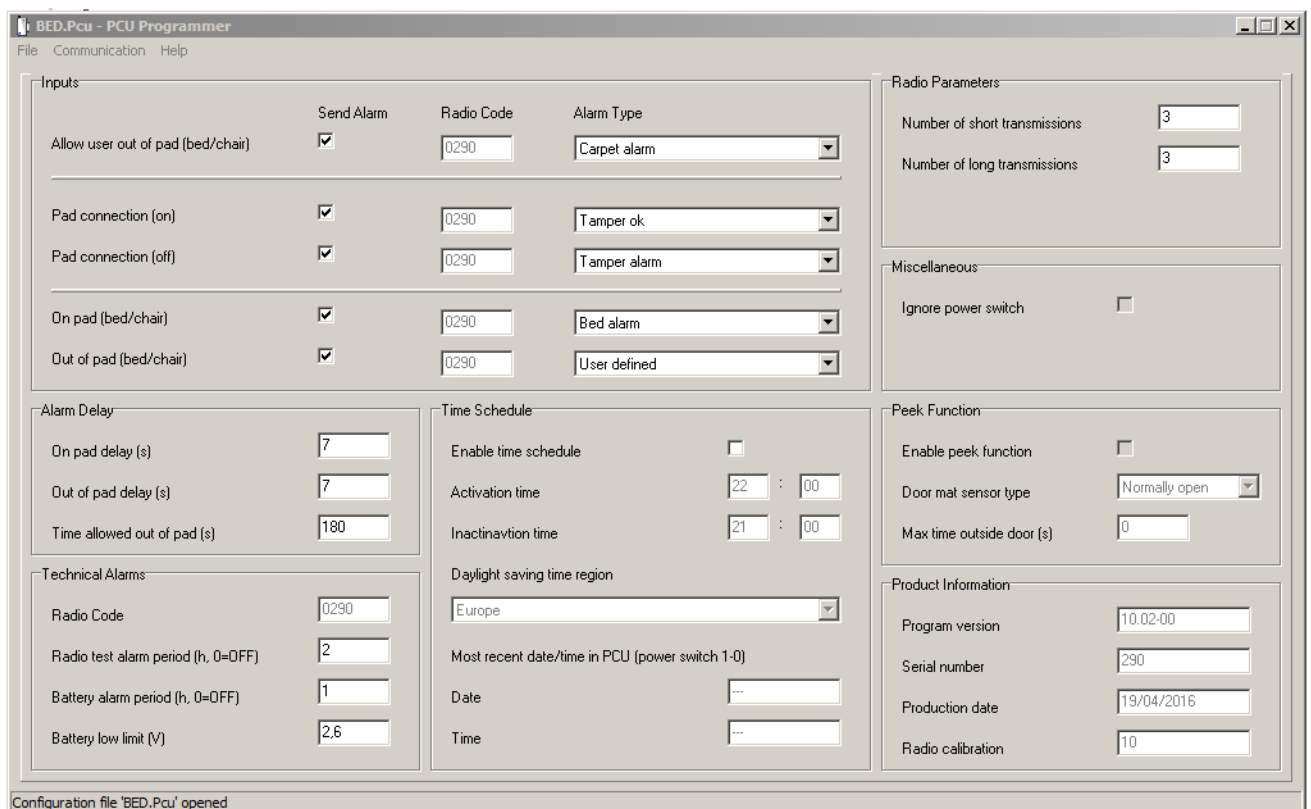


Here are the different configuration options that are displayed in the configuration software starting from the top left

Inputs

There are three sections within the Inputs box:

- SUPERIOR "Allow user to leave bed"
- MIDDLE "Unit connected and Unit disconnected" "for Tamper alarm"
- BOTTOM "Lying down Alarm and Up Alarm" for the activation of, for example, the lighting system.



For the TREX 2G system it is recommended to work only with a radio code, in all the sections, since you can work with the types of alarms to make the different groups of work

Inputs	Send Alarm	Radio Code	Alarm Type
Allow user out of pad (bed/chair)	<input checked="" type="checkbox"/>	0290	Carpet alarm
Pad connection (on)	<input checked="" type="checkbox"/>	0290	Tamper ok
Pad connection (off)	<input checked="" type="checkbox"/>	0290	Tamper alarm
On pad (bed/chair)	<input checked="" type="checkbox"/>	0290	Bed alarm
Out of pad (bed/chair)	<input checked="" type="checkbox"/>	0290	User defined

WORK GROUPS:

1- Alarm "Allow the user to leave the bed" at a set time:

This function allows the sending of an alarm when the configured time is exceeded.

To activate this service it will only be necessary to check the box "Allow the user to leave the bed", it is recommended to use the Carpet /Up alarm (type 7).

The screenshot shows the 'BED.Pcu - PCU Programmer' software interface. The 'Inputs' section is visible, with the 'Send Alarm' checkbox for 'Allow user out of pad (bed/chair)' circled in red. Below this, the 'Alarm Delay' section shows 'On pad delay (s)' set to 7, 'Out of pad delay (s)' set to 7, and 'Time allowed out of pad (s)' set to 180. The 'Time Schedule' section shows 'Enable time schedule' unchecked, 'Activation time' set to 22:00, and 'Inactivation time' set to 21:00.

Once the function is activated, it is necessary to determine the time that you will allow the user to leave the bed, by checking in seconds the box "Allowed time of bed leaving", in this example 300 sg = 5 minutes. (Minimum time will be 180 sec)

Alarm Delay	
On pad delay (s)	7
Out of pad delay (s)	7
Time allowed out of pad (s)	300

2- "Lying/Up" Alarm

This function allows, in a complementary way, to send an alarm whenever the user is raised, in order, for example, to activate a night lighting system. (They are independent or complementary services, which can be configured according to the needs of the center.

To activate the service you must check the corresponding boxes. It is recommended to use the Type 6 Bed Alarm, to activate the lights and the Type 21 alarm set by the user to turn off the lights.

These lights can be connected to a WIOR unit that will be responsible for opening and closing the relays for the activation of the lighting system, the WIOR unit must be powered at 12/24v.

On pad (bed/chair)	<input checked="" type="checkbox"/>	0290	Bed alarm
Out of pad (bed/chair)	<input checked="" type="checkbox"/>	0290	User defined

It is very important that you determine a delay time in the sending of this alarm since some users move in the sleep process, sometimes outside the contact with the sensor. Depending on these movements, you will have to adjust the time (a minimum of 5 seconds is recommended) in order to avoid false alarms of lying when there has simply been a movement in the bed; This false alarm would activate the light in the wrong way.

This is the section where you must set the time (minimum 5 seconds).

Alarm Delay	
On pad delay (s)	7
Out of pad delay (s)	7
Time allowed out of pad (s)	300

On the other hand, you should also activate the "lying down" service; for example, turn off the bathroom lights once the user returns to bed:

On pad (bed/chair)	<input checked="" type="checkbox"/>	0290	Bed alarm
Out of pad (bed/chair)	<input checked="" type="checkbox"/>	0290	User defined

You must also establish a small delay in the sending of the alarm, in this way you allow keeping the lighting longer until the user is fully lying down.

Alarm Delay	
On pad delay (s)	7
Out of pad delay (s)	7
Time allowed out of pad (s)	300

3- Unit connected and Unit disconnected Alarm

In this section, you can manage the sensor disconnection alarms to the central unit, known as a tamper alarm. When the sensor is accidentally or intentionally disconnected (Tamper - alarm 29), the unit will report by sending an alarm, and the system will send a connection alarm (Tamper ok - alarm 59) when the sensor is connected again. In order to optimize the life of the battery, **the sensor will check the connection port every 5 minutes**, so the alarm could take up to 5 minutes.

Pad connection (on)	<input checked="" type="checkbox"/>	0290	Tamper ok
Pad connection (off)	<input checked="" type="checkbox"/>	0290	Tamper alarm

For the NEO system we work with different radio codes in order to differentiate between Up and Lying down since the NEO terminal does not identify radio codes, we will also use different radio codes for tamper alarms, one for connection and one for disconnection.

On pad (bed/chair)	<input checked="" type="checkbox"/>	1A1A	Bed alarm
Out of pad (bed/chair)	<input checked="" type="checkbox"/>	2B2B	Carpet alarm

Technical Alarms

The system allows the configuration of technical alarms.

Radio Test Alarm, the system will automatically send an auto test alarm according to the indicated time. In this way, you will know that the device is operational. (23 hours is recommended, provided there is a system such as the DTECT ALARM waiting for this alarm, for and before a fault, sending an alarm of revision, Alarm type 24).

Battery Alarm Period: The unit will automatically resend the low battery alarm, according to the time indicated in this box. 240 hours are recommended, as the user has several months to replace the battery.

Technical Alarms	
Radio Code	0290
Radio test alarm period (h, 0=OFF)	23
Battery alarm period (h, 0=OFF)	240
Battery low limit (V)	2,6

ATTENTION: technical alarms need to be activated, so never insert the value 0, otherwise the unit will not work.

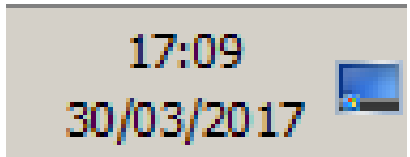
Time schedule:

The system allows deactivating the service, in this example the system is deactivated during the dayshift between 8:30 AM to 9:00 PM.

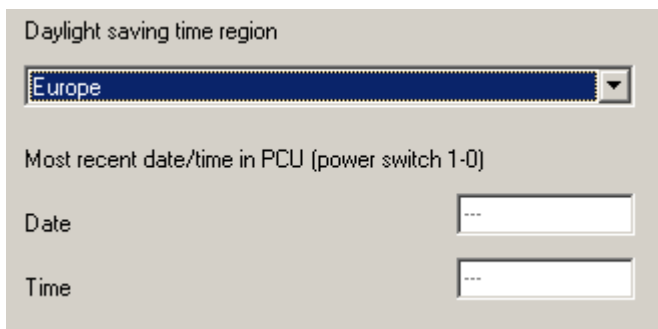
Time Schedule	
Enable time schedule	<input checked="" type="checkbox"/>
Activation time	21 : 00
Inactivation time	08 : 30

Time Region:

The PCU will synchronize the computer clock, you have to pay especial attention to this in order to guarantee the deactivation time.

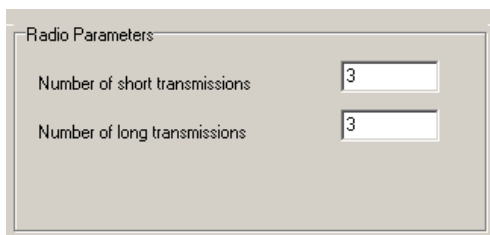


In the box you always have to select Europe, it does not matter if you are in other country.



Radio Parameters

This section is not enabled; the unit will send an unlimited number of alarms until it is received by the signal repeater units or TREX transceivers.



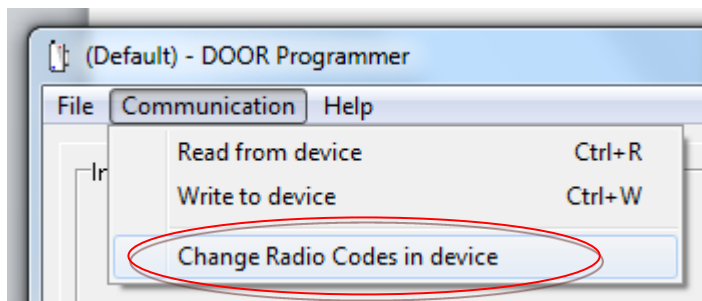
Product Information

Below you can find the information about the program version, serial number, manufacturing and radio calibration.

Product Information	
Program version	10.02-00
Serial number	290
Production date	19/04/2016
Radio calibration	10

Change Radio Codes in Device

To change the radio codes of the unit, you have to access the communication section.

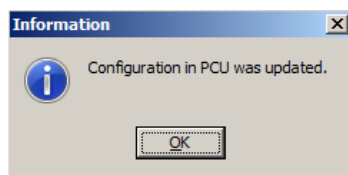


After making the changes, click on the option "Write to device".

	Old radio codes	New radio codes
Allow user out of pad (bed/chair)	BD01	BD01
Pad connection (on)	BD01	BD01
Pad connection (off)	BD01	BD01
On pad (bed/chair)	BD01	BD01
Out of pad (bed/chair)	BD01	BD01
Technical alarms	BD01	BD01

Buttons: Abort, Write to device

To verify that changes have been made correctly, you can read the unit again.



File handling

In the configuration menu, you can save the device configuration. When we need to replace the unit, keeping the same radio codes and configuration, you have to open the file you previously stored and write the configuration on the new unit.

