



Document Title DTECT ALARMS			Page 1 of 15
Author Commercial Dept.	Modification Date 24/05/2010	Document Type Installation Guide	Version 1.2

DTECT ALARMS

Installation Guide

Created by:	Juan Jose Criado	11/05/2009	V 1.2
Translated by:	Alejandro Barreras	24/05/2010	
Approved by:	Juan Jose Criado		



Document Title DTECT ALARMS			Page 2 of 15
Author Commercial Dept.	Modification Date 24/05/2010	Document Type Installation Guide	Version 1.2

CHANGELOG

Date	Author	Changes	Version
11/05/2009	Alejandro Barreras	Document creation	1.0
14/05/2009	Alejandro Barreras	Workstation status control and Queue log	1.1
24/05/2009	Alejandro Barreras	Alarm Report creation	1.2



Document Title			Page
DTECT ALARMS			3 of 15
Author	Modification Date	Document Type	Version
Commercial Dept.	24/05/2010	Installation Guide	1.2

Table of contents

Objective.....	4
Architecture	4
System Requisites	4
Installation	5
Hardware installation	5
Software installation	5
System configuration	5
Installation Process	7
D-TECT Alarm installation.....	7
Prerequisites.....	8
Software installation	9
Manual configuration of the system.....	12
Configuration files path	12
Dtect port configuration	13
Database connection configuration	14
Configuration of the application error log	14
Queue alarms siren configuration.....	15
Customization configuration	15
Uninstalling.....	15



Document Title DTECT ALARMS			Page 4 of 15
Author Commercial Dept.	Modification Date 24/05/2010	Document Type Installation Guide	Version 1.2

Objective

The main objectives are:

- Register the assistant activity with the Neat radio devices.
- Obtain information about the assistant quality control.
- Create reports to exploit this information.
- Incidences managing

Architecture

There can be two different configurations:

- Standalone workstation: Database, D-TECT and application running in the same workstation.
- Network workstation:
 - Application running in one workstation
 - Database in a different workstation
 - D-TECT Device connected in a different workstation (in the same network)

You can combine the three components in the same workstation. Furthermore, the application lets us to listen several D-TECT devices at the same time. This means that it is possible to install in different workstations the D-TECT device and the D-TECT Serial service with the purpose of transmitting through the Ethernet the alarms to the Database in big installations where could be divided in blocks or different modules which can be managed separately. Each block of the installation has independent User Devices and Assistant Trex.

System Requisites

- Operative system: Windows Vista, Windows Vista Service Pack 1, Windows XP Service Pack 2, Windows XP Service Pack 3.
- 32 bit systems: A computer with Intel micro or compatible, 1GHz or higher (there is recommended 2 GHz or higher). Just one micro supported.
- 64 bit systems: 1,4GHz micro or higher (2GHz recommended). Just one micro supported.
- Memory: 256MB RAM (1GB or higher recommended).
- Disk space: 1,6GB available (at least).
- D-TECT Alarm USB license key.
- Microsoft Framework .NET 3.5
- Microsoft SQL Server 2005 Express





Document Title			Page
DTECT ALARMS			5 of 15
Author	Modification Date	Document Type	Version
Commercial Dept.	24/05/2010	Installation Guide	1.2

Installation

Hardware installation

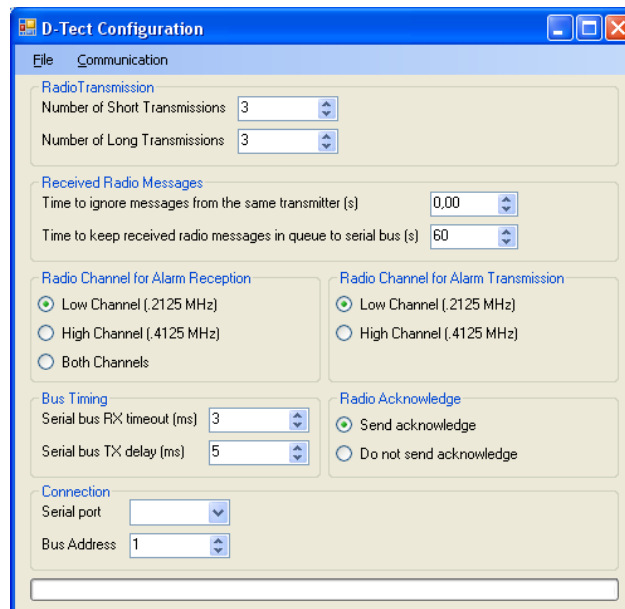
- D-TECT Device for receiving radio signals.
- USB Serial RS485 adaptor. Connects the RS485 to PC through USB. Please note that this port is different than RS232.
- USB cable for connecting the RS485 to the computer.
- RB45-DB9 cable for connecting the D-TECT to the computer through the RS485 adaptor.
- USB license key.

Software installation

- Windows installer 3.1 (Not necessary in Windows Vista).
- .NET Framework 3.5 (Not necessary in Windows Vista).
- Crystal Reports .NET Reporting Runtime.
- Microsoft SQL Server 2005 Express.
- USB license key driver
- D-TECT Alarm application.
- D-TECT Serial service.

System configuration

- D-TECT
 - Devices frequency.
 - Switch position: 1.
 - Time to ignore messages from the same transmitter(s).
 - R4 version at least. If there is a lower version the position alarms from the DATOM will not be managed correctly.
 - Low channel for receiving and transmitting.



This is the recommended configuration. Please check for each installation.

Document Title DTECT ALARMS			Page 6 of 15
Author Commercial Dept.	Modification Date 24/05/2010	Document Type Installation Guide	Version 1.2

- RS485 USB-Serial: Jumpers 1-2, 5-6, 7-8, 11-12, 15-16 and 19-20.

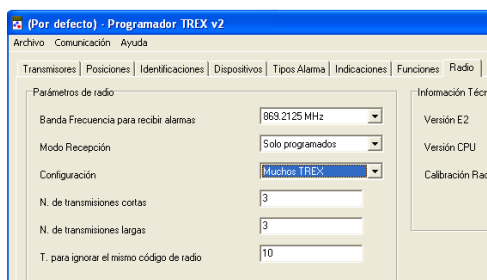


- RJ45-DB9 cable between D-TECT and the Serial Adaptor: 1-1, 2-2 and 5-5.
- TREX device:

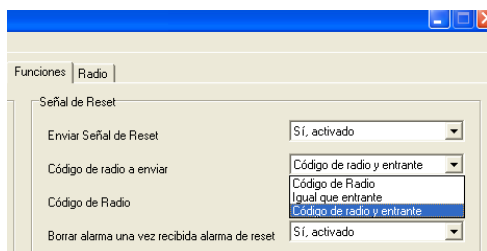


The next screen shows the required configuration:

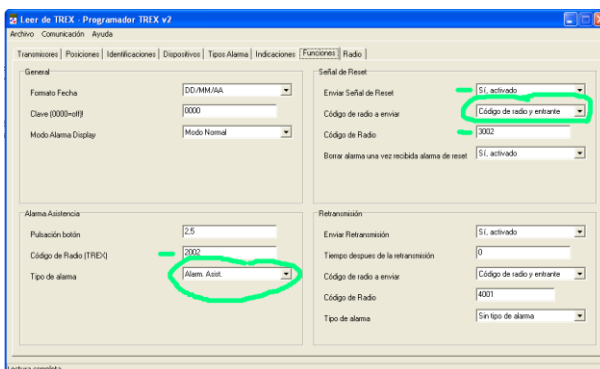
- Radio -> Configuration: Muchos trex.**



- Funciones -> Código de radio**



- Must have configured the radio code for the reset and assistance alarm: **Código de radio y entrante**





Document Title DTECT ALARMS			Page 7 of 15
Author Commercial Dept.	Modification Date 24/05/2010	Document Type Installation Guide	Version 1.2

- In Alarm Types must appear the señal de ayuda with the ID alarm code=20.

The screenshot shows the 'Tipos Alarma' tab in the 'Leer de TREC - Programador TREC v2' software. The table below represents the data shown in the screenshot:

Posición	ID Alarma	Texto	Indicación Acústica
1	0	Alarma	Usar tipo de dispositivo
2	8	Fallo corriente	Tipo 2
3	9	Corriente OK	Tipo 2
4	11	Batería baja	Tipo 2
5	35	Pos	Tipo 2
6	20	Ayuda	Tipo 3
7			
8			

Installation Process

First of all it is necessary to connect and install the USB-Serial device (RS485) which will create a new serial port in the computer. This action will make as able to select the new port during the installation process. If you don't install this serial port before the installation process, you will need to configure the program manually to choose the desired serial port.

Besides, if you install the D-TECT device and you leave it connected to the system, it will start working when the installation process finishes.

D-TECT Alarm installation

Windows Vista:

- It is necessary to deactivate the User Account Control (UAC).
- Windows Installer and Framework .NET 3.5 are already installed. There is not necessary to install them again.

Windows XP:

- It is necessary to install Windows Installer and Framework .NET 3.5. If they are already installed, it is not necessary to install them again.

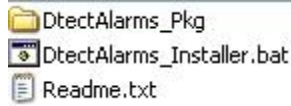
There is the same case with Microsoft SQL Server 2005 Express and Crystal Reports .NET, if they are already installed, it is not necessary to install them again.



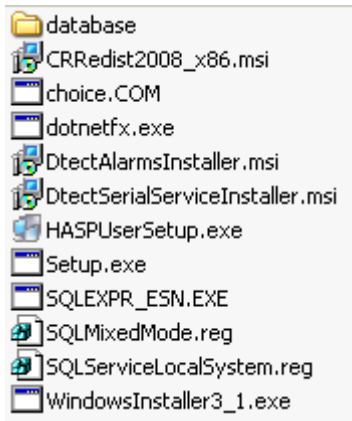
Document Title			Page
DTECT ALARMS			8 of 15
Author	Modification Date	Document Type	Version
Commercial Dept.	24/05/2010	Installation Guide	1.2

Prerequisites

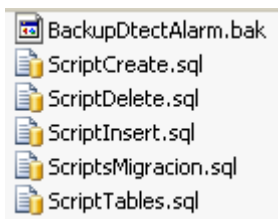
1. You need to have the following folder structure:



DtectAlarms_Pkg folder contains:



Database subfolder contains:



2. Then, click on DtectAlarms_Installer.bat file:



3. Plug your USB license key.

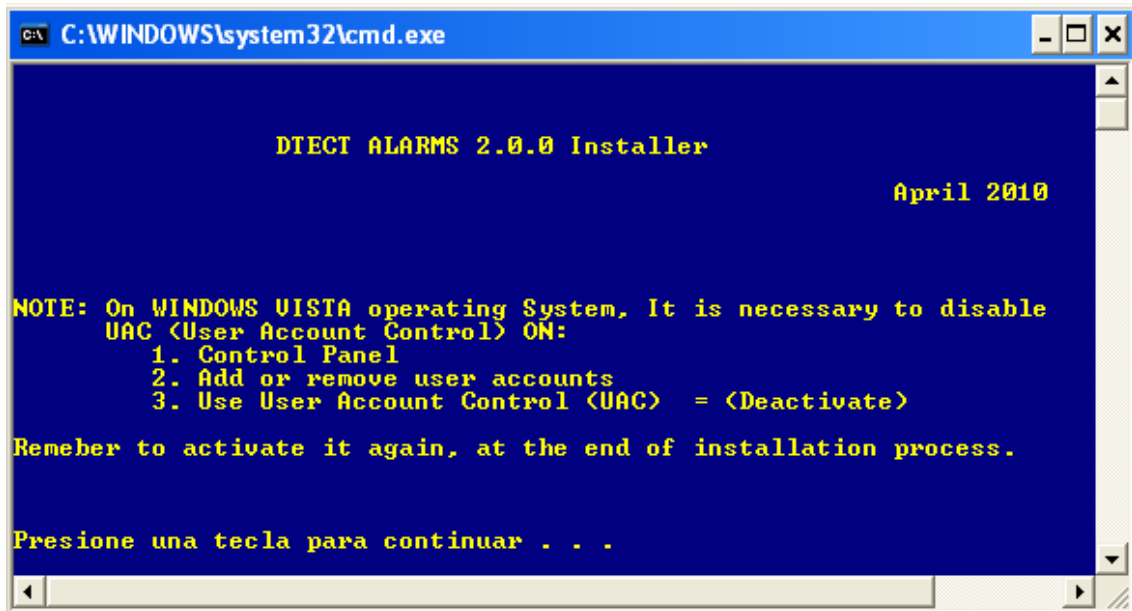




Document Title			Page
DTECT ALARMS			9 of 15
Author	Modification Date	Document Type	Version
Commercial Dept.	24/05/2010	Installation Guide	1.2

Software installation

The double-click on DtectAlarms bat file will start the installation process, showing the following picture:

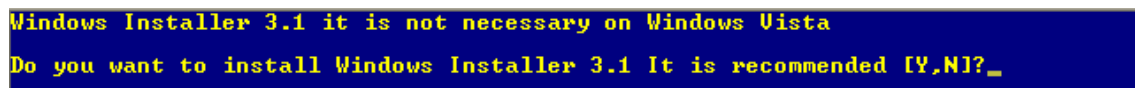


Then the system will ask for the required components:

- Windows Installer
- Framework .NET 3.5
- .NET reporting runtime (Crystal Reports)
- Microsoft SQL Server 2005 Express. The installation will reset the administrator database password if it exists.

During this process the system will ask for each component:

Windows Installer 3.1 (Windows XP only)



Framework .NET 3.5 (Windows XP only)



.NET Reporting Runtime



Microsoft SQL Server 2005 Express





Document Title			Page
DTECT ALARMS			10 of 15
Author	Modification Date	Document Type	Version
Commercial Dept.	24/05/2010	Installation Guide	1.2

There will be modified a few options of SQL Server 2005 Express

```
Local System Account has been enabled

SQL Mixed Mode has been enabled
El servicio de SQL Server (SQLEXPRESS) está deteniéndose.
El servicio de SQL Server (SQLEXPRESS) fue detenido con éxito.

El servicio de SQL Server (SQLEXPRESS) está iniciándose..
El servicio de SQL Server (SQLEXPRESS) se ha iniciado con éxito.
```

It is necessary to install the USB license key drivers. If it was previously installed, just click N to skip this step.

```
Driver for USB-Key driver required. Do you want to install it? [Y,N]?
```

Then the installation will continue.

```
Installing DTECT ALARMS ...

An USB-LICENSE-KEY is needed. Please if you don't have it, please contact to.

by phone: +34 902 365 748
by email: Dpto.Tecnico.Taller@gruponeat.com
          subject: DTECTALARMS USB Key License

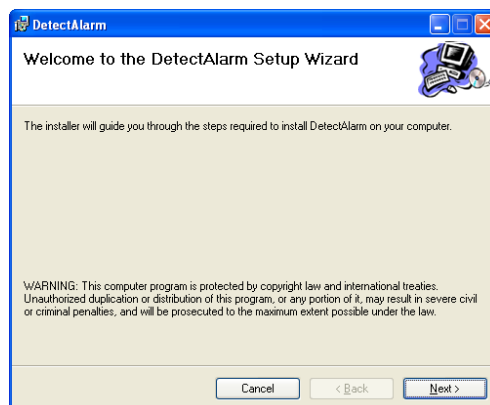
PLEASE BE SURE USB-LICENSE-KEY IS ALREADY PLUGGED
CHECK USB-LICENSE-KEY RED LIGHT INDICATOR IS ON

Presione una tecla para continuar . . .
```

Before starting the application installation it is necessary to have the USB license key. If you don't have this key the contact data will be displayed on the screen for requesting.

It is necessary to have it plugged into the USB port. The key will have a led illuminated indicating that its status is right. If the led is not lit, please check the driver.

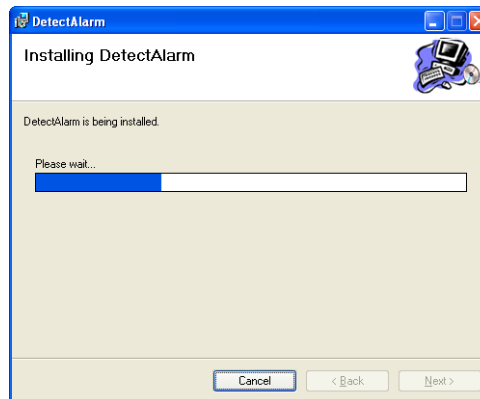
Then, the app will continue with the installation:





Document Title			Page
DTECT ALARMS			11 of 15
Author	Modification Date	Document Type	Version
Commercial Dept.	24/05/2010	Installation Guide	1.2

Click next until the process starts



A popup will appear asking for the desired language and the serial port which will be used:



The next step requires configuring the database. The installer will recognize any previous installation. If this is the first time that the app is installed, the system will just show the following option:

- Create a new database (blank database)

If this is not the first time that the app has been installed:

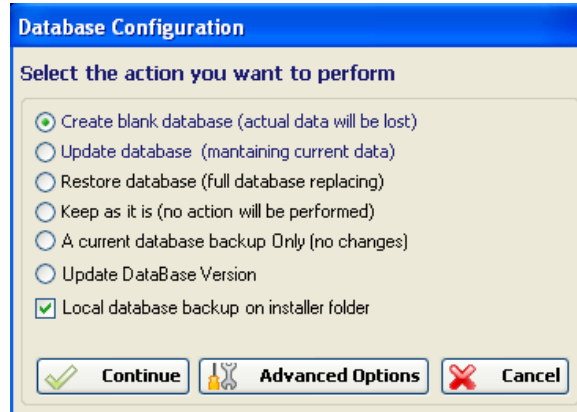
- Restore database: Useful if:
 - You want to restore the database because you have lost data (or you have wrong and non useful data).
 - You want to restore the database of another place. Useful if you have a twin installation or very similar one.
- **Do nothing:** This option skips the database configuration step. You will use this option if you are just updating the application and you want to leave the database as it is.
- Update Database Version: This option updates the database from the old version (v1.0 C2.0) to the current version.

Any of this options will create a backup of the database for preventing any problem.



Document Title			Page
DTECT ALARMS			12 of 15
Author	Modification Date	Document Type	Version
Commercial Dept.	24/05/2010	Installation Guide	1.2

Besides, if the program is being installed from a I/O device (USB device for example) the system will create a backup on the USB device automatically.



The app installation has finished. The system will continue with the service installation. The program will ask if you want to install the DTECT service. It will install it, but stopped.

```
Do you want to install Dtect Serial Service? [Y,N]?
```

The system will ask now if you want to start the service. If you don't start it now, the system will start it automatically the next time that Windows starts.

```
Do you want to Start DtectSerialService? It is recommended [Y,N]?
```

The installation process has finished.

```
DETECT ALARMS Installation process finished

Presione una tecla para continuar . . .
```

Manual configuration of the system

Configuration files path

The configuration file is located into the following path:

C:\Program Files \NEAT\DtectAlarms

And in the DtectSerial service installation path

C:\Program Files\NEAT\DtectSerial



Document Title			Page
DTECT ALARMS			13 of 15
Author	Modification Date	Document Type	Version
Commercial Dept.	24/05/2010	Installation Guide	1.2

It has the following name:

 SistemaDtectAlarm.UserInterfaces.exe.config 4 KB XML Configuration File

Dtect port configuration

It is located into the following path:

C:\Program Files\NEAT\DtectSerialService\DtectSerial.exe.config

These configuration files are XML easily understandable files. The labels which start with the dash key are just comments or deactivated configurations

<!-- - Example - - >

You will need to add in the <ConfigSections> section an entry for each port you want to use:

```
<configSections>
  <section
    type="System.Configuration.NameValueSectionHandler" />
  </configSections>
```

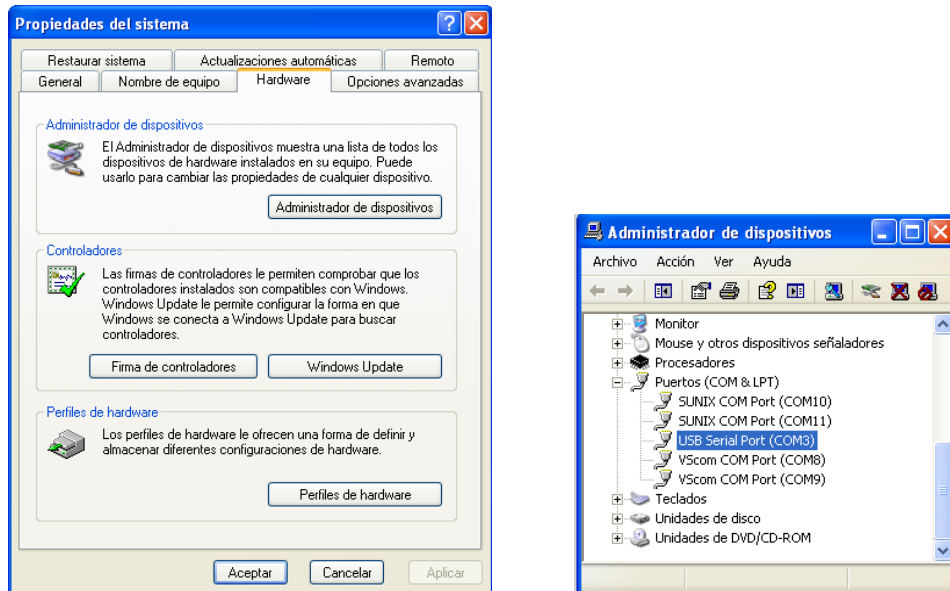
```
<Port1>
  <add key="portName" value="COM3"/>
  <add key="baudRate" value="9600"/>
  <add key="dataBits" value="8"/>
  <add key="parity" value="N"/>
  <add key="stopBits" value="1"/>
</Port1>
```

You can add more ports if necessary.

```
<!--<Port2>
  <add key="portName" value="COM12"/>
  <add key="baudRate" value="9600"/>
  <add key="dataBits" value="8"/>
  <add key="parity" value="N"/>
  <add key="stopBits" value="1"/>
</Port2>-->
```

| | | | |
|---------------------------------------|--|--|-------------------------|
| Document Title
DTECT ALARMS | | | Page
14 of 15 |
| Author
Commercial Dept. | Modification Date
24/05/2010 | Document Type
Installation Guide | Version
1.2 |

To know where the RS485 port is configured, you need to access Device Management inside Control Panel.



You need to look for the label "USB Serial Port", and the comport will appear between brackets. The configuration of the port will be: 9600 bps, 8 data bits, 1 stop bit and without parity.

Database connection configuration

The default connection route is: .\SQLEXPRESS.

- "." means the computer where the database is.
- \SQLEXPRESS is the database instance name. i

It is not necessary to change any other parameter.

```
<connectionStrings>
  <add name="cnDtectAlarm" connectionString="Data
Source=.\SQLEXPRESS;Initial Catalog=
providerName="System.Data.SqlClient" />
  DtectAlarm;" />
</connectionStrings>
```

Configuration of the application error log

These are the available languages and their codes:

- Spanish es-ES
- English en-GB
- German de-DE

```
<!--Permite cambiar el idioma de la aplicacion entre ingles value="en-GB" y
español value="es-ES"-->
<add key="Culture" value="es-ES" />
```



Document Title			Page
DTECT ALARMS			15 of 15
Author	Modification Date	Document Type	Version
Commercial Dept.	24/05/2010	Installation Guide	1.2

Queue alarms siren configuration

Allows to change the interval that the sound is played (in seconds).

```
<!--Tiempo en segundos de demora del sonido de la alarma-->  
<add key="Tiempo" value="5" />
```

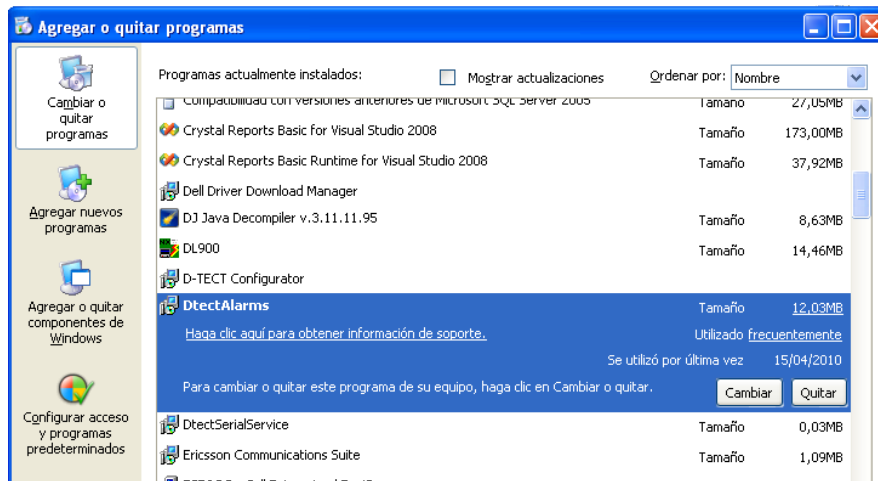
Customization configuration

Allows to change the logo to customize the reports.

```
<!--Logo de reportes-->  
<add key="Logo" value="C:\Logo Reportes\images.jpg" />
```

Uninstalling

You need to perform this action from Add or Remove Programs inside Control Panel.



You need to remove DtectAlarms and DtectSerialService to uninstall the system completely.