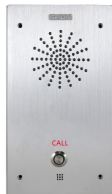


# NAS-8523C

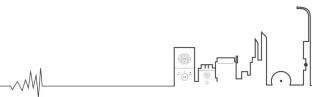
## IP POE Wall Mount Intercom Station



SPON IP POE Wall Mount Intercom Station NAS-8523C with a separate microphone and speaker, allowing full duplex conversations with Master Stations. It is equipped with two assignable call button which used for any indoor environment .

## MAIN FUNCTIONS

1. With 6mm aluminum panel, anti-stab protection and special screws to prevent vandalism.
2. With built-in 3W speaker and microphone ,available for hands-free calls.
3. With line-output interface to connect with external active speaker or earphone.
4. With relay I/O interface for system linkage or access control.
5. Support offline calling without management software , the offline call target can be pre-definded on its web UI.
6. Support one press calling ,the call target can be pre-definded on management software.
7. Support standard SIP protocol for easy intergration with mainstream SIP PBX(Yeastar、Asterisk、Cisco,etc,).
8. Support IEEE 802.3af interface for flexible deployment .
9. Support remote management and online upgrade .



## SPECIFICATION

### Power Parameters

---

Power Supply: DC24V/1A、PoE IEEE802.3af

Standby Power Consumption:≤3W

### Audio Parameters

---

S/N (Signal-to-Noise) Ratio:Broadcast-Speaker:81dB、Broadcast-Line:88dB、Line in-Record out:82dB

Audio Sampling & Bit Rate:22.05KHz 16bit, 8kbps-320kbps

Built-in Speaker(Power output):3W

Built-in Speaker(Impedance):8ohm

Built-in Mic:Electret Microphone

Built-in Mic(Sensitivity):-45±3dB

Built-in Mic(Directivity):Omnidirectional

Harmonic Distortion: < 1%

Frequency Respinse:40Hz~10KHz (WAV) 、50Hz~20KHz (MP3)

### Network Parameters

---

Network I/F:10BASE-T/100BASE-TX RJ45

Network Protocol:TCP/IP、UDP、ARP、ICMP、IGMP、SIP、HTTP、FTP

Configuartion Method:Web Interface

### Mechanical&Environment Properties

---

Mounting Method:Wall-mounted

Installation Environment:Dry Indoor Locations

Operating Temperature:-20°C~55°C (-4°F~131°F)

Operating Humidity:≤90% RH non-condensing

Body Material:Aluminium alloy

Color:Silver

Back Shell Material:Steel

Product Dimension:101x191x46mm

Product Weight:0.95 kg

Product Warranty:2 Years

### ACCESSORIES

---

1×Power Adaptor(24V/1A)

4×Allen Screw(M3\*12)

1×Allen Wrench(2.5mm)

1×Wiring Terminal(3.5-2P)

1×Wiring Terminal(3.5-3P)

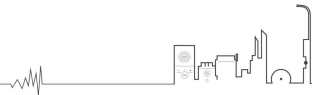
4×Half Round Head Philips Screw(ST4\*25)

1×Red-Black Line(X2-80)

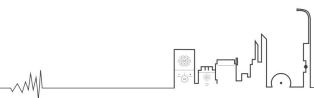
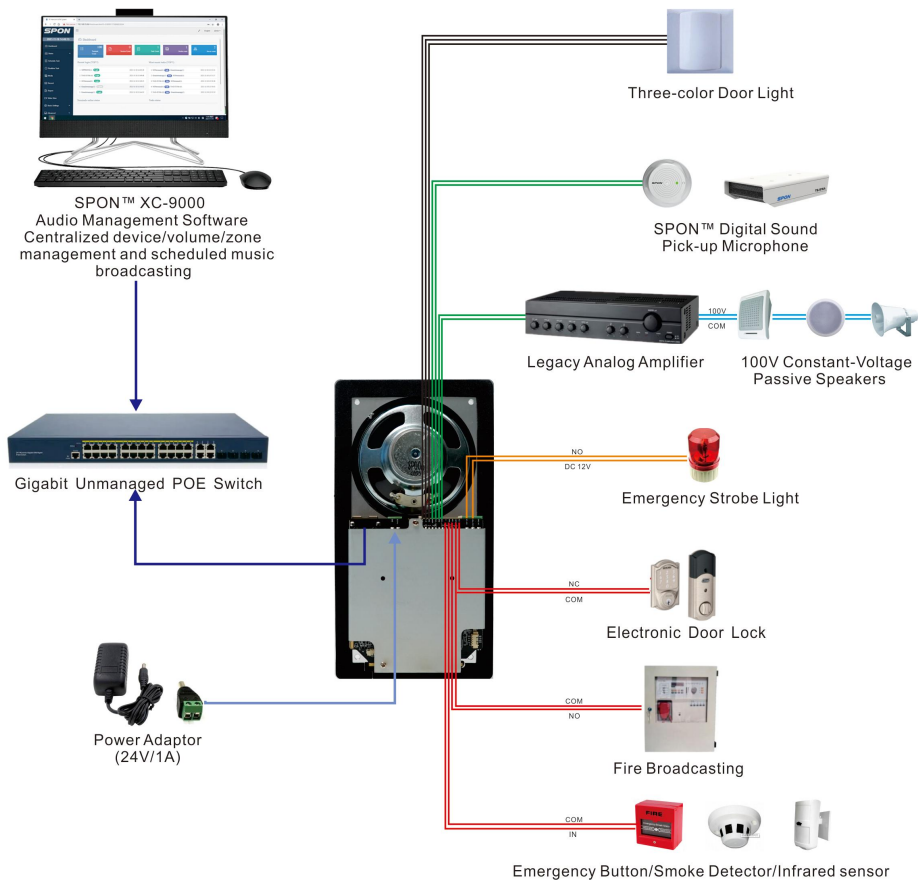
1×Red-White Line(X12-100)

1×Quality Certificate&Warranty Card

1×Quick Installation Guide



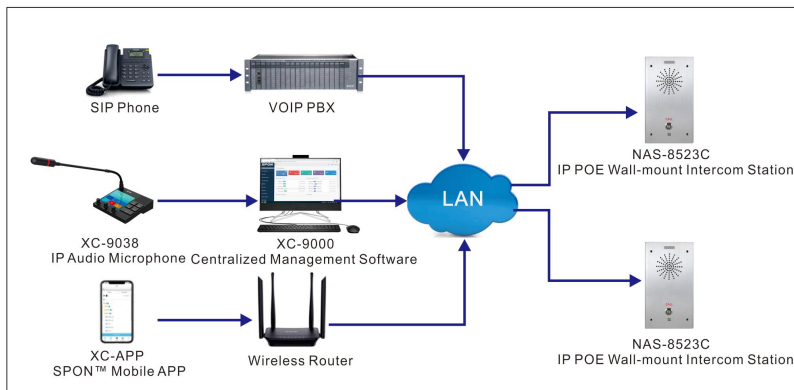
## INTERFACE DESCRIPTION



## APPLICATION

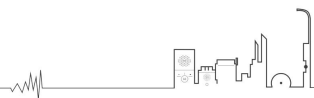
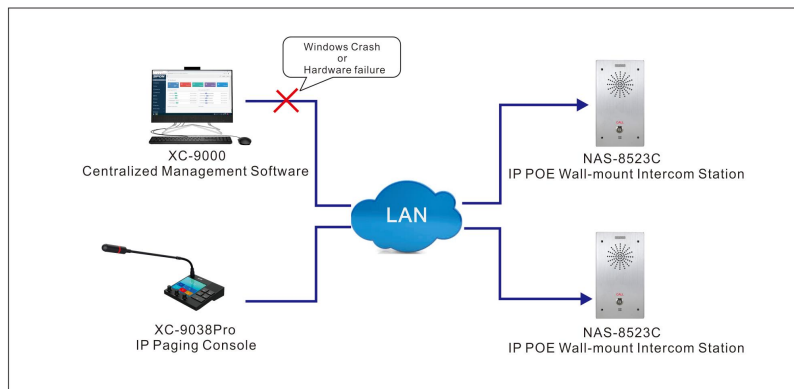
### Application 1

The IP POE Wall-mount Intercom Station NAS-8523C support SIP protocol which can be independently used as a sip endpoint to integrated with mainstream VOIP system for receiving sip call from SIP phone or SIP softphone ; Meanwhile , it also can receive call from SPON IP paging microphone or mobile APP under the SPON management software .



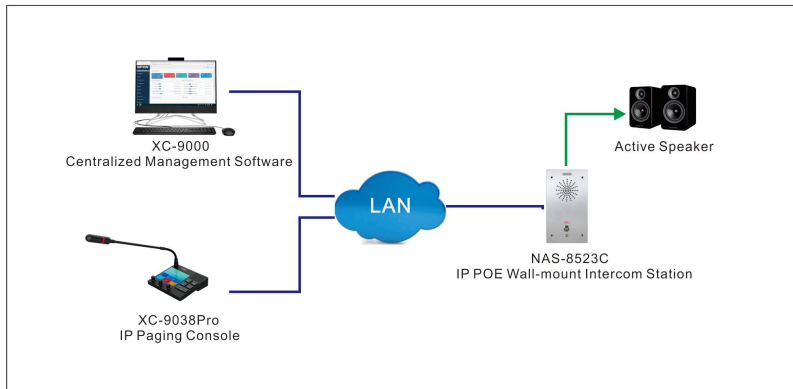
### Application 2

The IP POE Wall-mount Intercom Station NAS-8523C support offline intercom function , it can receive and initiate offline calling without centralized software , the offline call target can be set on its webpage.



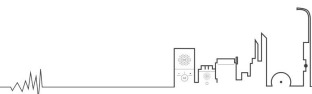
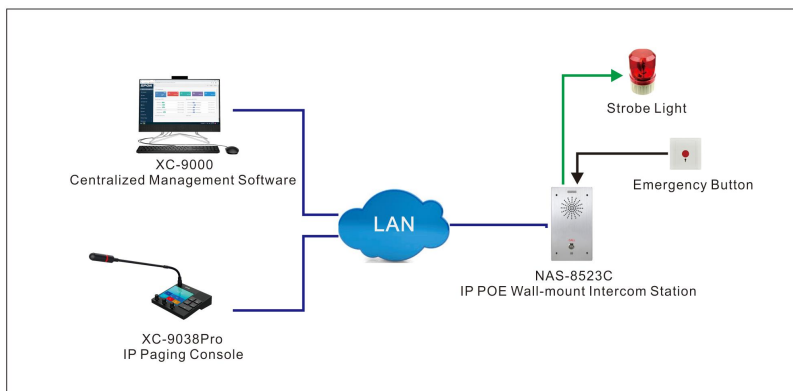
### Application 3

The IP POE Wall-mount Intercom Station NAS-8523C with built-in speaker and line output interface which can receive broadcasting from IP paging mic or Centralized management software , user can choose the sound out from built-in speaker or external active speaker.

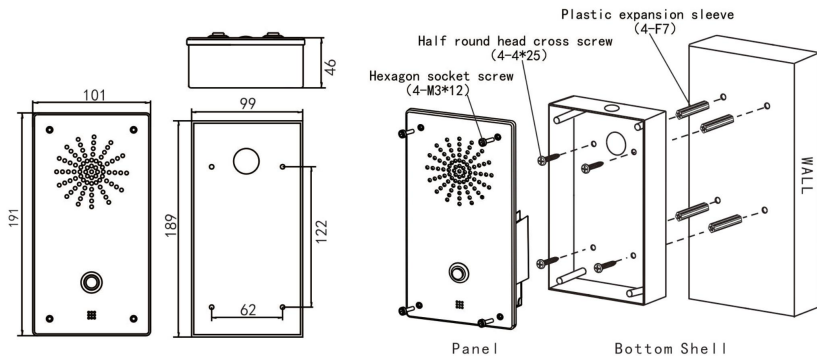


### Application 4

The IP POE Wall-mount Intercom Station NAS-8523C with relay I/O interface which can be connect with emergency button or smoke detector , strobe light or electronic door lock . During intercom call , the relay output can be triggered by the remote IP paging mic .User also can set the task of triggering the automatic call through the emergency button in the software.



## INSTALLATION

**Installation instructions:**

First use 4 plastic expansion sleeves and round head Phillips screws to install the bottom shell in a suitable position, then use 4 pcs M3\*12 hexagon socket screws to fix the panel on the bottom shell.

