

XC-9201V

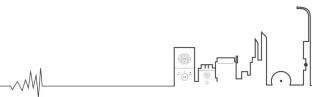
IP PoE Outdoor Industrial Video Telephone



SPON IP PoE Outdoor Industrial Video Telephone XC-9201V with Aluminum alloy casted shell with strong anti-riot property , its protection level can be reached to IP66 . Thanks to its strong shell material and protection level , it is suitable for installation in extremely harsh environments, such as high noise, high dust, high low temperature, strong acid and alkali, etc.

MAIN FUNCTIONS

1. Aluminum alloy casted shell with strong anti-riot property and automatic door-covering function
2. With numerical keys to make a random full-duplex intercom to any terminals
3. With emergency call button ,can make a one-button call to the preset terminal
4. Supportive of offline talking without server
5. Built-in wide-angle HD camera and supports video output in a variety of resolution.
5. Supportive of initiating and receiving broadcast function
6. With one relay output and two amplifier output interface ,can be connected with alarm light and passive speaker
7. With standard RJ45 interface supportive of crossing network segment and router ,accessible to the system if the Ethernet is available
8. Supportive of POE power supply



SPECIFICATION

Power Parameters

Power Supply:DC24V,2.7A or POE

Standby Power Consumption:<40W

Power Output:2*30W/8Ω (DC) , POE not support

Audio & Video Parameters

Audio Codec:WAV, PCM, ADPCM

Audio Sampling & Bit Rate:8kHz~44.1kHz, 16bit, 8kbps~320kbps

Built-in Speaker:3W ,4Ω

Video Coding:VGA/720P/1080P

S/N(Broadcast-Speaker):≥93dB

THD (Total Harmonic Distortion):<0.3% , 1kHz

Frequency Response:25Hz-15kHz

Antistatic Range:±6KV

Surge resistant voltage:±4KV

Handset-Speaker:Moving Coil , 130Ω

Handset-Microphone:Electret,1.2KΩ

Network Parameters

Network I/F:10BASE-T/100BASE-TX RJ45

Network Protocol:TCP/IP、UDP、ARP、ICMP、IGMP、SIP、HTTP

Configuration Method:Web Interface or DevConfig Tool

Mechanical&Environment Properties

Mounting Method:Wall-mounted

Installation Environment:Outdoor Locations

Operating Temperature:-20℃~+60℃

Operating Humidity:≤90% RH non-condensing

Housing Material:Aluminum Alloy

Housing Surface Treatment Method:Powder Spraying

Color:Yellow

Product Dimensions:346*241*125mm

Product Weight:7.4KG

Protection Level:IP66

Product Warranty:2 Years Limited

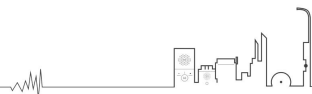
Accessories

1×Waterproof Joint

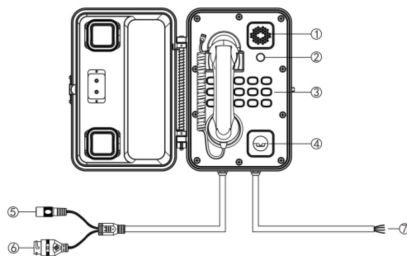
1×Quick Installation Guide

1×Certificate of Quality and Warranty Card

1×Power Adaptor(DC24V/2.7A)



INTERFACE



- ① Speaker
- ② Camera
- ③ Function button

Button	Function
"0-9" Number button	Used for input target ID when initiate intercom.
"#", "*" Button	"Ok" button, "Cancel" button
"☎" Button	Hands-free call button
"CALL" Button	Emergency call button, press it to call the server mapping target ID directly.
"PA" Button	Initiate broadcast.

Note:

1. When picking up the handset, the digital zone light is normally on, and it is normally off when the handset is put down.

2. When offline, the hands-free, emergency call, and broadcast three function button lights flash slowly, and the lights are always on when the line is idle.

④ Pickup mic

⑤ Power input interface: 24V/2.7A power input.

⑥ Network interface: insert cable to connect with the switcher, so that the terminal can normally login to server. (The device supports power supply by POE, so it is needn't to connect with any power supply if the network interface has already connected POE switcher.)

⑦ Six-core tail line, the relevant interface functions are as follows:

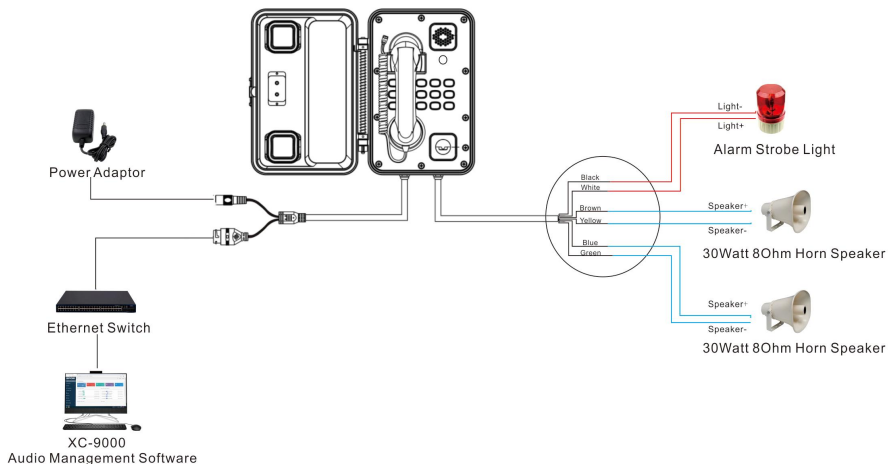
- Black line, white line: alarm output port, connected to the police light. The white line is connected to the positive (+) and the black line is connected to the negative (-). (Alarm output voltage: $12V \pm 5\%$, maximum current: 500mA).

- Brown line, yellow line: power amplifier output port, brown line is the speaker positive (+), yellow line is the speaker negative (-).

- Green line and blue line: Firmware backup interface. Power on when shorted, the device will be restored to factory settings.



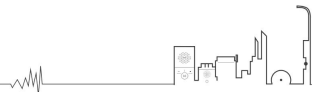
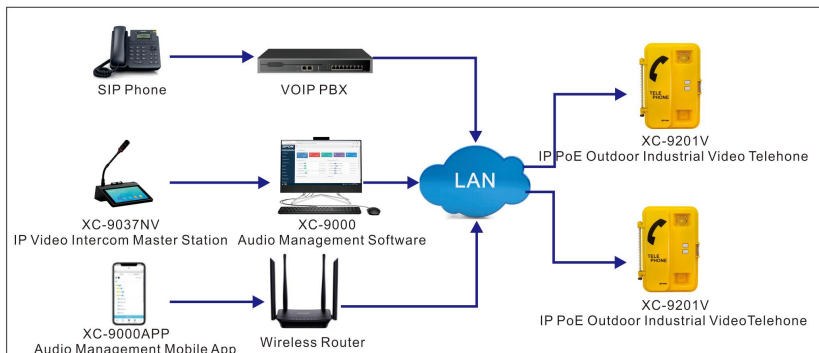
WIRING



APPLICATION

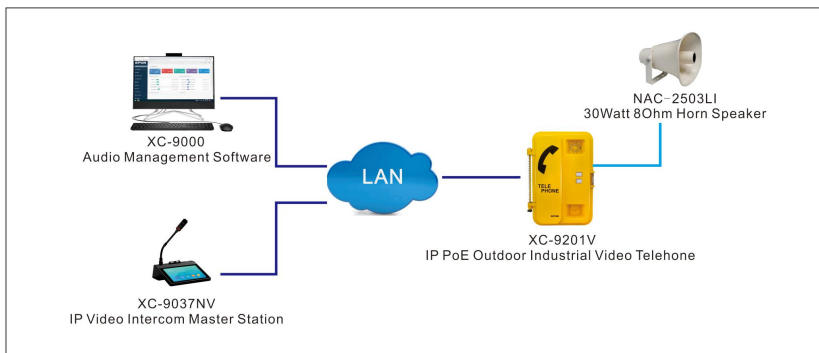
APPLICATION 1

The IP PoE Outdoor Industrial Video Telephone XC-9201V can receive audio intercom initiated by the 3-rd party VOIP telephone、 IP paging Cosole/APP(Windows、 Android/IOS),etc.

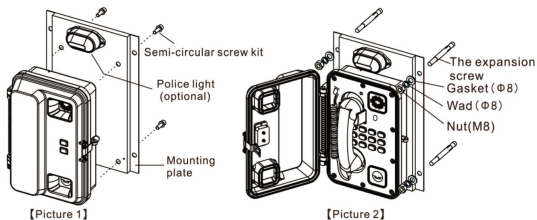


APPLICATION 2

The IP PoE Outdoor Industrial Video Telephone XC-9201V can be connected with external horn speaker (8Ω), it can receive the broadcast tasks from server or IP Paging Console and the sound can be output from the horn speaker ;



INSTALLATION



Step 1: secure the main unit to the mounting plate using the semi-circular screw kit in the accessory. As shown in Picture1. (If don't select alarming light , then the mounting plate and terminal is already secured , users can install it directly following step 2)

Step 2: in the installation position of the equipment, pre-drill the hole of the expansion sleeve according to the hole size of the mounting plate, knock the expansion screw into the wall of the installation position, and then fix the equipment with nuts and washers, as shown in Picture 2.

Note:

1) Expansion screws are not standard accessories, please choose suitable screws according to wall strength. When installing, please ensure the stability of the wall surface. It can't be installed directly on a wall with insufficient strength, such as gypsum board .If so , please reinforce the installing position to avoid any accident ;

2) Please pay attention to the grounding of the equipment during installation. The grounding wire can be connected to any screw on the mounting plate on the back of the device.

