

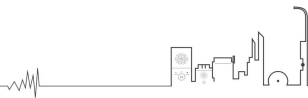
## XC-9603A03/06/12 IP Outdoor Column Loudspeaker



SPON IP Outdoor Column Loudspeaker XC-9603A03/06/12 is a versatile loudspeaker. With an IPX5 rating, it can be used externally for applications such as public address, music streaming, pre-recorded message broadcast and scheduled announcements. It is mainly suitable for Park, Playground, outdoor plaza, etc outdoor environment.

### MAIN FUNCTIONS

1. All-in-one design, integrated with network audio decoding, digital amplifier and loudspeaker unit.
2. Support offline broadcasting due to its built-in high-capacity flash and clock chip.
3. Built-in loop detection function, which can monitor the working status of the speakers remotely, easy maintenance.
4. Support ambient noise detection when idle, and automatically adjusts the broadcast output volume according to the noise level.
5. Support remote volume adjustment on the server software.
6. Support standard SIP protocol for easy integration with mainstream SIP PBX (Yeastar, Asterisk, Cisco, etc.).
7. Support web page parameter configuration and remote firmware upgrade.
8. Standard RJ45 network interface, which can be accessed wherever there is an Ethernet port, and supports cross-network segment and cross-routing.



## SPECIFICATION

### Power Parameters

---

Power Supply:AC220V/50Hz

Standby Power Consumption:≤40W(Power Output : 30W)

≤75W(Power Output : 60W)

≤150W(Power Output : 120W)

### Audio Parameters

---

Audio Codec:MP2 , MP3, PCM, ADPCM

Audio Sampling & Bit Rate:8kHz~44.1kHz, 16bit, 8kbps~320kbps

S/N:≥80dB

Frequency Response:200Hz-18KHz

Sensitivity:90dB/M/W(XC-9603A03)、93dB/M/W(XC-9603A06/12)

### Network Parameters

---

Network I/F:10BASE-T/100BASE-TX RJ45

Network Protocol:TCP/IP、UDP、ARP、ICMP、IGMP

Configuration Method:Web Interface

### Mechanical&Environment Properties

---

Mounting Method:Wall-mounted

Installation Environment:Dry Indoor Locations Only

Operating Temperature:-20℃~+55℃ (-4°F~+131°F)

Operating Humidity:10%-90% RH non-condensing

Shell Color&Material:White&Aluminium Alloy

Net Color&Material:White&Steel

Net Surface Treatment:Powder Spraying

Bracket Material:Steel

Product Dimensions:227x125x510mm、227x125x710mm、227x125x1110mm

Product Weight:5.1kg、8.4kg、13.55kg

Product Warranty:2 Years Limited

### Accessories

---

Standard Accessories:

1×Quick Installation Guide、

1×Power Adaptor(DC24V/2.75A)、

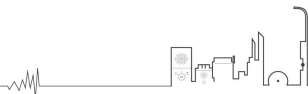
1×Certificate and warranty、

1×Rectangular metal piece、

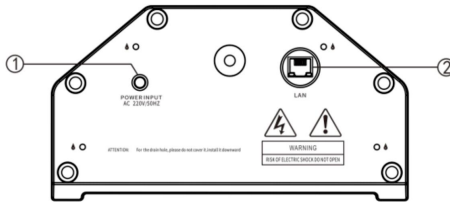
2×L-type installation frame、

2×Nut&Spring washers、

1×Waterproof tail wire connector



## INTERFACE INTRODUCTION

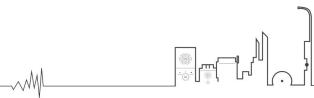
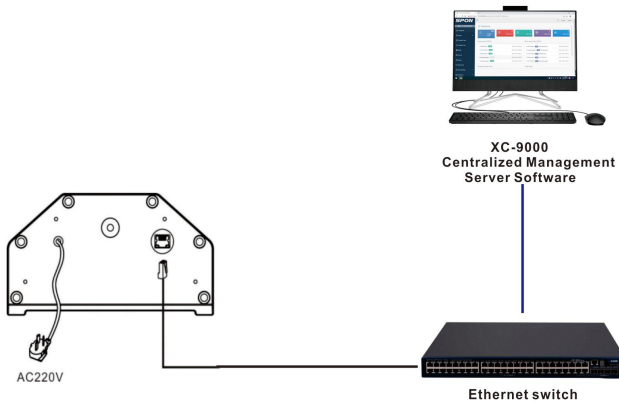


① Power supply interface : AC220V.

② Network interface : plugging network cable and connecting to switch.

Note: ⚠ This icon means weep hole , please do not cover or block it.

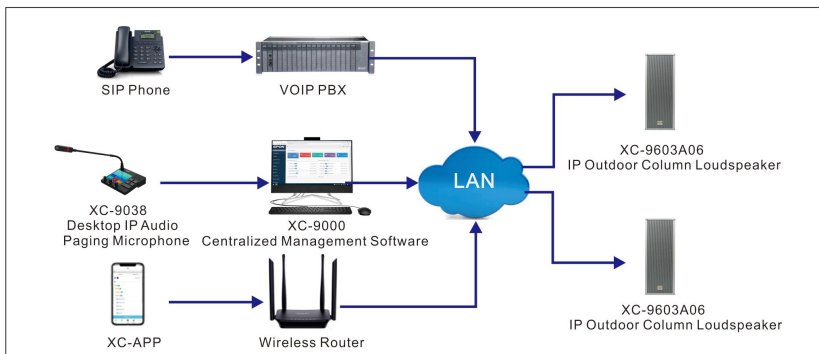
## CONNECTION DIAGRAM



## TYPICAL APPLICATION

### APPLICATION 1

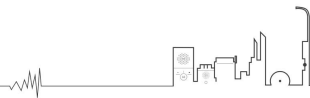
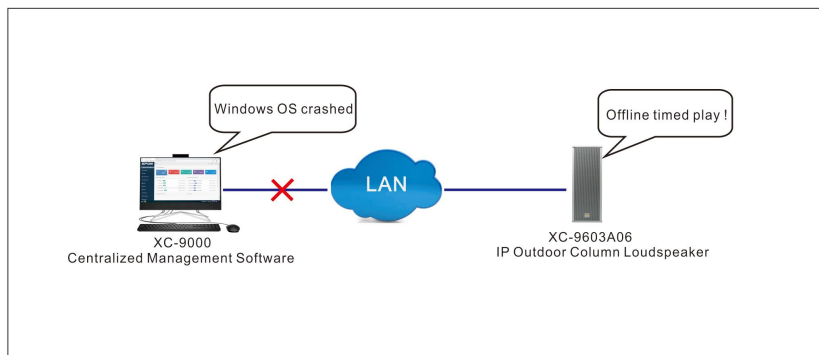
The IP Outdoor Column Loudspeaker XC-9603A03/06/12 can receive broadcasting from SPON management software、IP paging microphone、the third-party sip phone (Integrated with SPON software via SIP trunk).



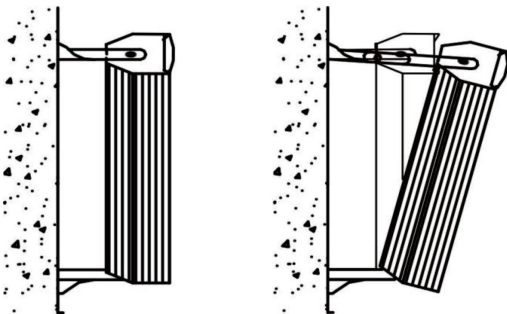
### APPLICATION 2

The IP Outdoor Column Speaker support offline broadcasting. When the speaker is offline, the scheduled ringing task set by the server software can be played regularly.

Note:Offline schedule task need to be imported into speaker's FTP in advance.



## INSTALLATION



Installation instructions: Install three screws with a diameter of 8mm on the facade where the column speaker needs to be installed, install the bracket as shown in the figure above, and fix the sound column. If necessary, extend the upper bracket with the included tongue to adjust the depression angle of the column.

Note: The installation method of this column speaker is vertical installation (horizontal installation is not allowed), the outlet ends of the power cord and network cable face down, and do not block the water leakage hole (see the silk screen on the bottom of the machine for the location of the water leakage hole). During installation, the strength of the mounting surface must be ensured to avoid the risk of falling.

